

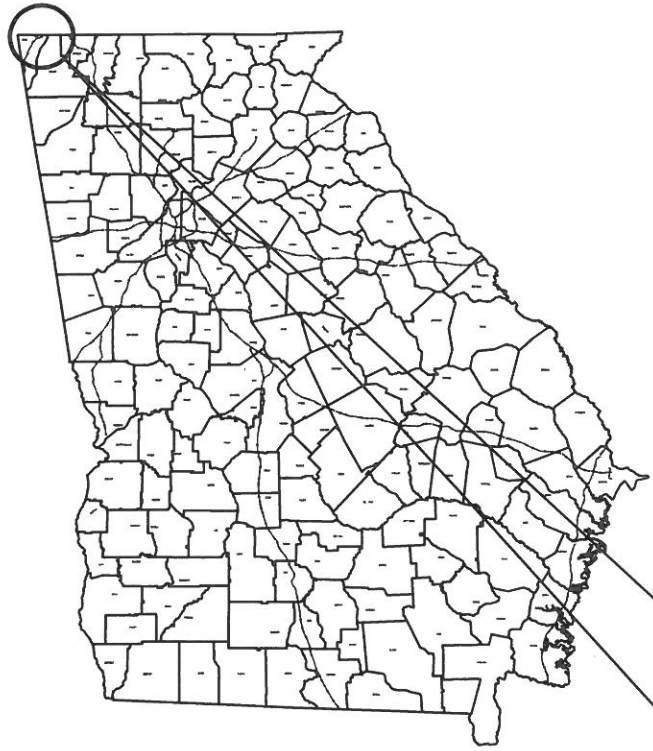
DEPARTMENT OF TRANSPORTATION STATE OF GEORGIA

OVERHEAD/SUBSURFACE UTILITY ENGINEERING

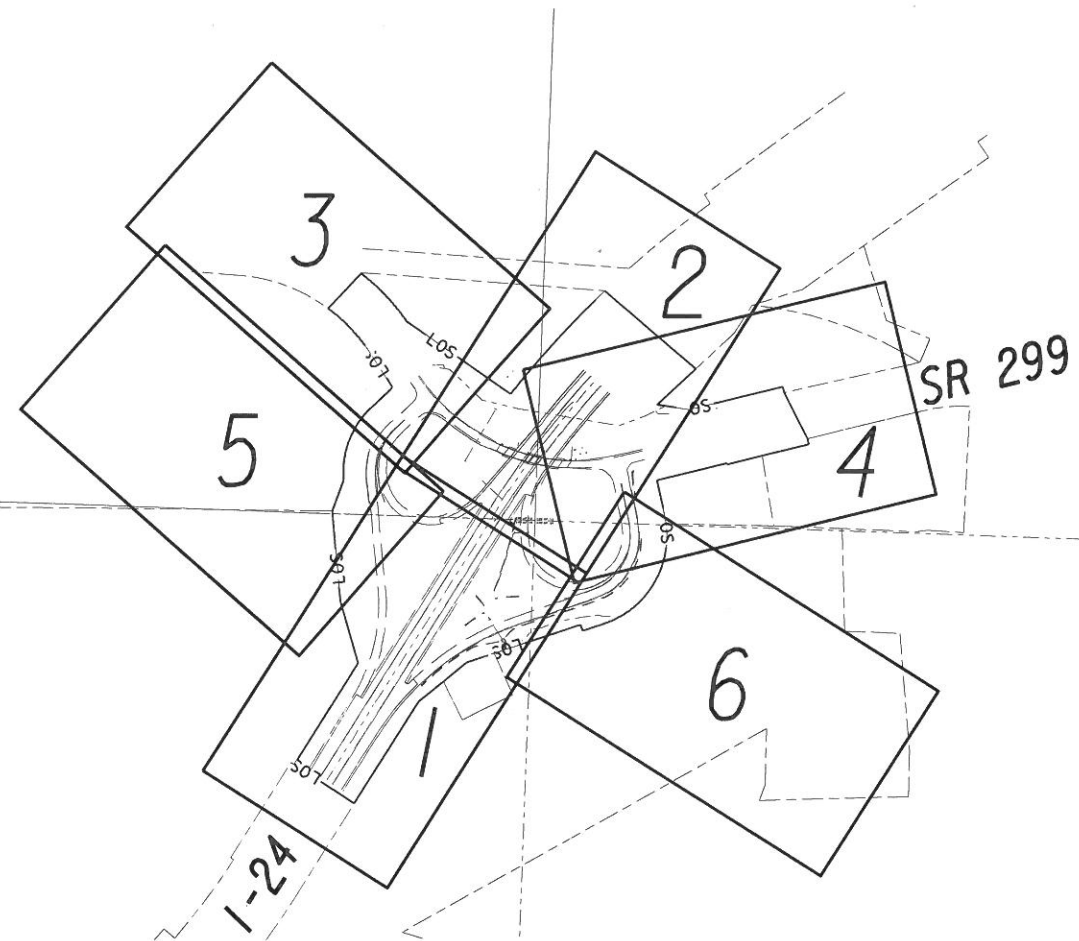
I-24 @ SR 299
6 MILES NE OF NEW ENGLAND

DADE COUNTY

P. I. 0011682



PROJECT
LOCATION



INDEX OF SHEETS	DRAWING NO.
COVER PAGE	24-00A
GENERAL NOTES	24-00B
UTILITY LEGEND	24-00C
POLE DATA SHEETS	24-00D
PLAN SHEETS	24-001 - 24-006



PLAN RELEASE			
DRAWN BY	DATE	CHECKED BY	DATE
JMJ	10/02/13	MSW	10/04/13

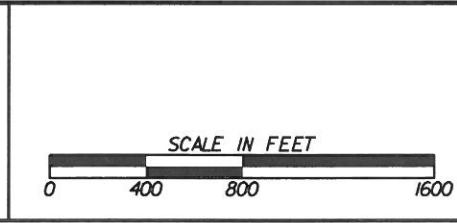
P. I. 0011682
TASK ORDER *1 JOB ORDER *4
KCI PROJECT NUMBER: 05123053D
KCI CONTACT: MIKE S. WILSON



KCI
TECHNOLOGIES

ENGINEERS
PLANNERS
SCIENTISTS
CONSTRUCTION MANAGERS

2160 Satellite Boulevard
Suite 130
Duluth, GA 30097
Phone: 678-990-6200
Fax: 678-990-6222
www.kci.com



REVISION DATES		
NO.	DATE	DESCRIPTION

STATE OF GEORGIA
DEPARTMENT OF TRANSPORTATION
OFFICE: UTILITIES

UTILITY PLANS

I-24 @ SR 299
6 MILES NE OF NEW ENGLAND

DRAWING No.
24-00A

GENERAL NOTES:

- (1) WHERE INDICATED, UTILITY PIPE SIZE AND MATERIAL ARE BASED ON VISUAL EVIDENCE OR RECORD PLANS.
- (2) EMPTY CONDUITS, OVERHEAD COMMERCIAL LIGHTING, TRAFFIC CONTROL SENSORS IN PAVING, IRRIGATION/SPRINKLER, AND OTHER PRIVATELY OWNED UTILITY LINES WERE NOT INCLUDED IN THIS SUE PROJECT.
- (3) SIZE AND MATERIAL TYPE INFORMATION SHOWN HEREON IS TAKEN FROM AVAILABLE UTILITY RECORDS.
- (4) ALL UNDERGROUND TELEPHONE IS DIRECT-BURIED UNLESS OTHERWISE NOTED.
- (5) UNLESS NOTED ON PLANS, ALL FH CONNECTIONS ARE UNK SIZE/TYPE.

AN OVERHEAD/SUBSURFACE UTILITY ENGINEERING INVESTIGATION (SUE) WAS PERFORMED AND COMPLETED ON 09/12/2013 FOR THIS PROJECT. THE EXISTING OVERHEAD AND UNDERGROUND FACILITIES SHOWN HEREON WERE INCLUDED IN THIS SUE INVESTIGATION. THE PRESENCE OF THESE UTILITY FACILITIES HAS BEEN THOROUGHLY INVESTIGATED AND THE METHOD OF DETERMINING THEIR LOCATION IS INDICATED AS SHOWN IN THE PLANS. UTILITIES THAT HAVE BEEN INSTALLED AFTER THE DATE ABOVE HAVE NOT BEEN INCLUDED IN THIS INVESTIGATION AND SHOULD BE CONSIDERED AS FROM RECORD DRAWINGS ONLY. ALL OTHER EXISTING TOPOGRAPHIC FEATURES DEPICTED HEREON HAVE BEEN REFERENCED FROM A TOPOGRAPHIC / MAPPING SURVEY MAP AND CONTROL PACKAGE PROVIDED BY GDOT WHICH WAS RECEIVED ON 08/21/2013. KCI TECHNOLOGIES, INC. DOES NOT WARRANT OR CERTIFY THE ACCURACY OR COMPLETENESS OF THE INFORMATION PROVIDED BY GDOT.

UTILITY SUMMARY:

ALL THE FOLLOWING UTILITY OWNERS WERE REPORTED TO HAVE FACILITIES WITHIN THE VICINITY OF THIS PROJECT AT THE TIME OF THE SUE INVESTIGATION. UTILITIES FOUND WITHIN THE LIMITS OF SURVEY (LOS) AT THE TIME OF THE SUE INVESTIGATION ARE NOTED FOR EACH UTILITY OWNER LISTED AND ARE SHOWN ON THE PLANS HEREON.

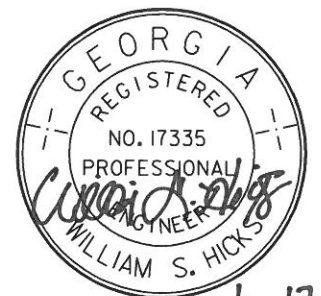
ATLANTA GAS LIGHT COMPANY (AGL)
 TEN PEACHTREE PLACE
 ATLANTA, GA 30309
 BEN MASSENGILL
 (404) 584-3238
 NOTE: ALL GAS LINES FOUND WITHIN THE LOS ARE OWNED BY ATLANTA GAS AND LIGHT UNLESS OTHERWISE NOTED ON THE PLANS.

AMERICAN TELEPHONE & TELEGRAPH (ATT)
 300 E. MARTIN LUTHER KING BLVD.
 CHATTANOOGA, TN 37403
 JOE PERREL
 (423) 266-1566
 NOTE: ALL TELECOMMUNICATIONS LINES FOUND WITHIN THE LOS ARE OWNED BY AMERICAN TELEPHONE & TELEGRAPH UNLESS OTHERWISE NOTED ON THE PLANS.

CHARTER COMMUNICATIONS (CHARTER)
 7133 HWY 41
 JASPER, TN 37347
 FRANKY DALE
 (706) 463-2083
 NOTE: ALL CABLE TV LINES FOUND WITHIN THE LOS ARE OWNED BY CHARTER COMMUNICATIONS UNLESS OTHERWISE NOTED ON THE PLANS.

DADE COUNTY WATER AUTHORITY (DCWA)
 250 BOND STREET
 TRENTON, GA 30752
 EDDIE CARTER
 (423) 508-4222
 NOTE: ALL WATER AND SANITARY SEWER LINES FOUND WITHIN THE LOS ARE OWNED BY DADE COUNTY WATER AUTHORITY UNLESS OTHERWISE NOTED ON THE PLANS.

GEORGIA POWER COMPANY - ELECTRICAL DISTRIBUTION (GPC)
 224 HOLMES ROAD
 ROWE, GA 30161
 ROGER DUNCAN
 (706) 506-3437
 NOTE: ALL ELECTRICAL DISTRIBUTION LINES FOUND WITHIN THE LOS ARE OWNED BY GEORGIA POWER COMPANY UNLESS OTHERWISE NOTED ON THE PLANS.



PLAN RELEASE				 ENGINEERS PLANNERS SCIENTISTS CONSTRUCTION MANAGERS 2160 Satellite Boulevard Suite 130 Duluth, GA 30097 Phone: 678-990-6200 Fax: 678-990-6222 www.kci.com	REVISION DATES			STATE OF GEORGIA DEPARTMENT OF TRANSPORTATION	
DRAWN BY	DATE	CHECKED BY	DATE					OFFICE: UTILITIES	
JMJ	10/02/13	MSW	10/04/13					UTILITY PLANS	
P. I. 0011682								1-24 @ SR 299	
TASK ORDER *1 JOB ORDER *4								6 MILES NE OF NEW ENGLAND	
KCI PROJECT NUMBER: 05123053D							DRAWING No. 24-00B		
KCI CONTACT: MIKE S. WILSON									

EXISTING OVERHEAD	OVERHEAD TO BE REMOVED	PROPOSED OVERHEAD	TYPE OF UTILITY
			ELECTRIC
			ELECTRIC/TELECOMMUNICATIONS
			ELECTRIC/CABLE TV
			ELECTRIC/TRAFFIC CONTROL
			ELECTRIC/TELECOMMUNICATIONS/CABLE TV
			ELECTRIC/TELECOMMUNICATIONS/CABLE TV/TRAFFIC CONTROL
			ELECTRIC/CABLE TV/TRAFFIC CONTROL
			ELECTRIC/TELECOMMUNICATIONS/TRAFFIC CONTROL
			GUY WIRE
			TELECOMMUNICATIONS
			TELECOMMUNICATIONS/TRAFFIC CONTROL
			TELECOMMUNICATIONS/CABLE TV/TRAFFIC CONTROL
			TELECOMMUNICATIONS/CABLE TV
			CABLE TV
			CABLE TV/TRAFFIC CONTROL
			TRAFFIC CONTROL

EXISTING UNDERGROUND	UNDERGROUND TO BE REMOVED	PROPOSED UNDERGROUND	TYPE OF UTILITY
			ELECTRIC (OL-D)
			ELECTRIC (OL-C)
			ELECTRIC (OL-B)
			TELECOMMUNICATIONS (OL-D)
			TELECOMMUNICATIONS (OL-C)
			TELECOMMUNICATIONS (OL-B)
			CABLE TV (OL-D)
			CABLE TV (OL-C)
			CABLE TV (OL-B)
			WATER (OL-D)
			WATER (OL-C)
			WATER (OL-B)
			WATER FOR LABELED PIPE SIZES (OL-D)
			WATER FOR LABELED PIPE SIZES (OL-C)
			WATER FOR LABELED PIPE SIZES (OL-B)
			NON-POTABLE WATER (OL-D)
			NON-POTABLE WATER (OL-C)
			NON-POTABLE WATER (OL-B)
			NON-POTABLE WATER FOR LABELED PIPE SIZES (OL-D)
			NON-POTABLE WATER FOR LABELED PIPE SIZES (OL-C)
			NON-POTABLE WATER FOR LABELED PIPE SIZES (OL-B)
			STEAM (OL-D)
			STEAM (OL-C)
			STEAM (OL-B)
			STEAM FOR LABELED PIPE SIZES (OL-D)
			STEAM FOR LABELED PIPE SIZES (OL-C)
			STEAM FOR LABELED PIPE SIZES (OL-B)
			SANITARY SEWER WITH FLOW DIRECTION (OL-D)
			SANITARY SEWER WITH FLOW DIRECTION (OL-C)
			SANITARY SEWER WITH FLOW DIRECTION (OL-B)
			SANITARY SEWER WITH FLOW DIRECTION FOR LABELED PIPE SIZES (OL-D)
			SANITARY SEWER WITH FLOW DIRECTION FOR LABELED PIPE SIZES (OL-C)
			SANITARY SEWER WITH FLOW DIRECTION FOR LABELED PIPE SIZES (OL-B)
			SANITARY SEWER FORCE MAIN WITH FLOW DIRECTION (OL-D)
			SANITARY SEWER FORCE MAIN WITH FLOW DIRECTION (OL-C)
			SANITARY SEWER FORCE MAIN WITH FLOW DIRECTION (OL-B)
			GAS (OL-D)
			GAS (OL-C)
			GAS (OL-B)
			GAS FOR LABELED PIPE SIZES (OL-D)
			GAS FOR LABELED PIPE SIZES (OL-C)
			GAS FOR LABELED PIPE SIZES (OL-B)
			PETROLEUM (OL-D)
			PETROLEUM (OL-C)
			PETROLEUM (OL-B)
			PETROLEUM FOR LABELED PIPE SIZES (OL-D)
			PETROLEUM FOR LABELED PIPE SIZES (OL-C)
			PETROLEUM FOR LABELED PIPE SIZES (OL-B)
			TRAFFIC CONTROL (OL-D)
			TRAFFIC CONTROL (OL-C)
			TRAFFIC CONTROL (OL-B)
			UNKNOWN UTILITY FOUND IN SUE INVESTIGATION (OL-B)

UTILITY LEGEND

EXISTING	PROPOSED	TEMPORARY	DESCRIPTION
			ELECTRIC MANHOLE
			HAND HOLE
			TRANSFORMER
			ELECTRIC METER
			UTILITY POLE/GUY POLE
			LIGHT POLE
			GUY ANCHOR
			ELECTRIC BOX
			MARKER
			TELECOMMUNICATIONS MANHOLE
			TELECOMMUNICATIONS PEDESTAL
			SPLICE BOX
			SUBSCRIBER LOOP CARRIER (aka "SLICK")
			CABINET
			TRAFFIC CONTROL PEDESTRIAN SIGNAL/BUTTON POST
			TRAFFIC CONTROL MANHOLE
			PHONE BOOTH
			CABLE TV PEDESTAL
			CABLE TV MANHOLE
			WATER VALVE
			WATER METER
			WATER MANHOLE
			FIRE HYDRANT ASSEMBLY (INCLUDES ASSOCIATED VALVE)
			BACKFLOW PREVENTER
			PRESSURE INDICATOR VALVE
			AIR RELEASE VALVE
			WELL
			WATER VAULT
			WATER VALVE MARKER
			STAND PIPE
			CLEANOUT
			SANITARY SEWER MANHOLE
			AIR RELEASE VALVE
			GREASE TRAP
			SANITARY SEWER FORCE MAIN VALVE
			VENT

FOR PROPOSED/TEMPORARY
 TRAFFIC CONTROL INFORMATION
 REFER TO TRAFFIC SIGNAL PLANS

UTILITY CELLS

EXISTING	PROPOSED	TEMPORARY	DESCRIPTION
			GAS VALVE
			GAS METER
			GAS MANHOLE
			GAS PRESSURE REGULATOR
			GAS VAULT
			GAS TEST STATION
			GAS VALVE MARKER
			PETROLEUM VALVE
			MISC.
			LIMITS OF OVERHEAD AND SUBSURFACE UTILITY INVESTIGATION
			END OF INFORMATION AND SIGNIFIES THERE IS NO UTILITY RECORD INFORMATION AVAILABLE
			POLE ID
			QUALITY LEVEL (QL) DELINEATION
			SANITARY SEWER MANHOLE (SSMH) ID
			TEST HOLE (QL-A ONLY)
			UTILITY ENDPOINT

ABBREVIATIONS LEGEND

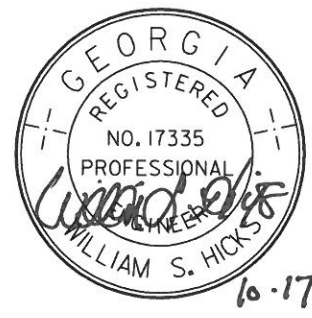
ABBREVIATION	DESCRIPTION
AATUR	ABANDONED ACCORDING TO UTILITY RECORDS
ACP	ASBESTOS CONCRETE PIPE
ARV	AIR RELEASE VALVE
CIP	CAST IRON PIPE
DIP	DUCTILE IRON PIPE
FO	FIBER OPTIC
FDC	FIRE DEPARTMENT CONNECTION
GALV	GALVANIZED PIPE
HP	HIGH PRESSURE
MP	MEDIUM PRESSURE
NURIA	NO UTILITY RECORD INFORMATION AVAILABLE
OVHD	OVERHEAD
PE	POLYETHYLENE PIPE
PLAS	PLASTIC PIPE
PR	PAIR
PVC	POLYVINYL CHLORIDE PIPE
RCP	REINFORCED CONCRETE PIPE
RIP	RETIRED IN PLACE
STL	STEEL PIPE
SVC	SERVICE, UNKNOWN SIZE/TYPE

QUALITY LEVELS AND DEFINITIONS

OL-D DEPICTED ACCORDING TO UTILITY RECORD INFORMATION AND IN-FIELD VISUAL INSPECTION. NO ELECTRONIC DESIGNATING INFORMATION WAS OBTAINED.
 OL-C EXISTING UTILITY STRUCTURES HAVE BEEN FIELD LOCATED AND SURVEYED TO ASSIST IN DEPICTING THE UTILITIES SHOWN ON RECORDS. NO ELECTRONIC DESIGNATING INFORMATION WAS OBTAINED.
 OL-B INFORMATION WAS OBTAINED THROUGH THE APPLICATION OF APPROPRIATE SURFACE GEOPHYSICAL METHODS TO DETERMINE THE EXISTENCE AND APPROPRIATE HORIZONTAL POSITION OF THE SUBSURFACE UTILITIES. OL-B DATA SHOULD BE REPRODUCIBLE BY SURFACE GEOPHYSICS AT ANY POINT OF THEIR DEPICTION. THIS INFORMATION IS SURVEYED TO APPLICABLE TOLERANCES DEFINED BY THE PROJECT AND REDUCED ONTO PLAN DOCUMENTS.
 OL-A OBTAIN PRECISE HORIZONTAL AND VERTICAL POSITION OF THE UTILITY LINE BY EXCAVATING A TEST HOLE. THE TEST HOLE SHALL BE DONE USING VACUUM EXCAVATION OR COMPARABLE NONDESTRUCTIVE EQUIPMENT IN A MANNER AS TO CAUSE NO DAMAGE TO THE UTILITY LINE. AFTER EXCAVATING A TEST HOLE, A FIELD SURVEY SHALL BE PERFORMED TO DETERMINE THE EXACT LOCATION AND POSITION OF THE UTILITY LINE.

TELEPHONE PAIR SIZE TABLE

TELEPHONE PAIR SIZE	TELEPHONE CABLE DIAMETER
5 - 100	0.50 TO 2.00 IN
101 - 2400	UP TO 3.50 IN

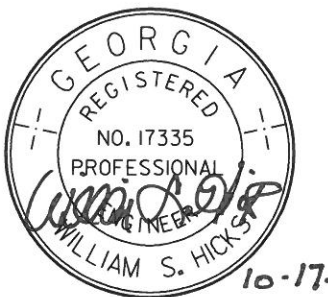


PLAN RELEASE				 ENGINEERS PLANNERS SCIENTISTS CONSTRUCTION MANAGERS 2160 Satellite Boulevard Suite 130 Duluth, GA 30097 Phone: 678-990-6200 Fax: 678-990-6222 www.kci.com	REVISION DATES		STATE OF GEORGIA DEPARTMENT OF TRANSPORTATION OFFICE: UTILITIES UTILITY PLANS 1-24 @ SR 299 6 MILES NE OF NEW ENGLAND
DRAWN BY	DATE	CHECKED BY	DATE				
JMJ	10/02/13	MSW	10/04/13				

POLE #	POLE ID	POLE OWNER	UTILITY OWNERS ATTACHED					NORTHING	EASTING	HT.	DIA.	MAT'L	MISC.
			ELEC	TELE COM	CABLE TV	TRAFFIC	OTHER						
100		GPC	GPC		CHART		1813164.7	1922223.8	66'	17"	WOOD		
101		GPC	GPC		CHART		1813483.9	1921933.1	68'	16"	WOOD		
102		GPC	GPC	ATT	CHART		1813795.9	1921026.6	44'	12"	WOOD		
103		GPC	GPC		CHART		1813789.9	1921086.1	49'	15"	WOOD		
105	1174	GPC	GPC	ATT			1813977.7	1921327.4	39'	12"	WOOD		
106	AE 9964 10A	GPC	GPC		CHART		1813756.9	1921377.5	49'	15"	WOOD		
107		ATT		ATT			1813521.2	1921229.9	21'	8"	WOOD		
108	3 1/2	ATT		ATT			1813478.7	1921392.0	29'	10"	WOOD		
109		GPC	GPC		CHART		1813716.8	1921719.5	58'	12"	WOOD		
110		ATT		ATT			1813393.7	1921456.0	30'	12"	WOOD		
111	4346	ATT		ATT			1813308.4	1921388.6	34'	15"	WOOD		
112	5537	GPC	GPC	ATT			1813154.7	1922767.2	44'	15"	WOOD		
113		GPC		ATT			1813327.0	1922783.1	25'	10"	WOOD		
114		GPC	GPC		CHART		1813327.8	1922784.0	31'	12"	WOOD		
115	2335	GPC	GPC	ATT			1813407.8	1922797.8	40'	12"	WOOD		
116		GPC	GPC				1812995.3	1922899.5	39'	12"	WOOD		
117		ATT		ATT			1812994.6	1922912.8	26'	10"	WOOD		
118	3	GPC	GPC				1813295.5	1922884.4	30'	10"	WOOD	LIGHT POLE	
119	AGH99 41	GPC	GPC				1813363.5	1922933.6	39'	14"	WOOD		
120	2	GPC	GPC				1813335.3	1923040.8	30'	9"	WOOD	LIGHT POLE	
121		GPC	GPC		CHART		1813404.4	1923086.3	39'	12"	WOOD		

POLE #	POLE ID	POLE OWNER	UTILITY OWNERS ATTACHED					NORTHING	EASTING	HT.	DIA.	MAT'L	MISC.
			ELEC	TELE COM	CABLE TV	TRAFFIC	OTHER						

Total American Telephone and Telegraph (ATT) Poles 5
 Total Georgia Power Company - Electrical Distribution (GPCT) Poles 16
 Total Pole Count 21



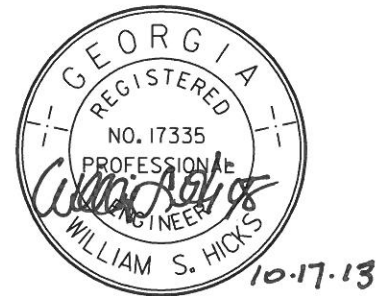
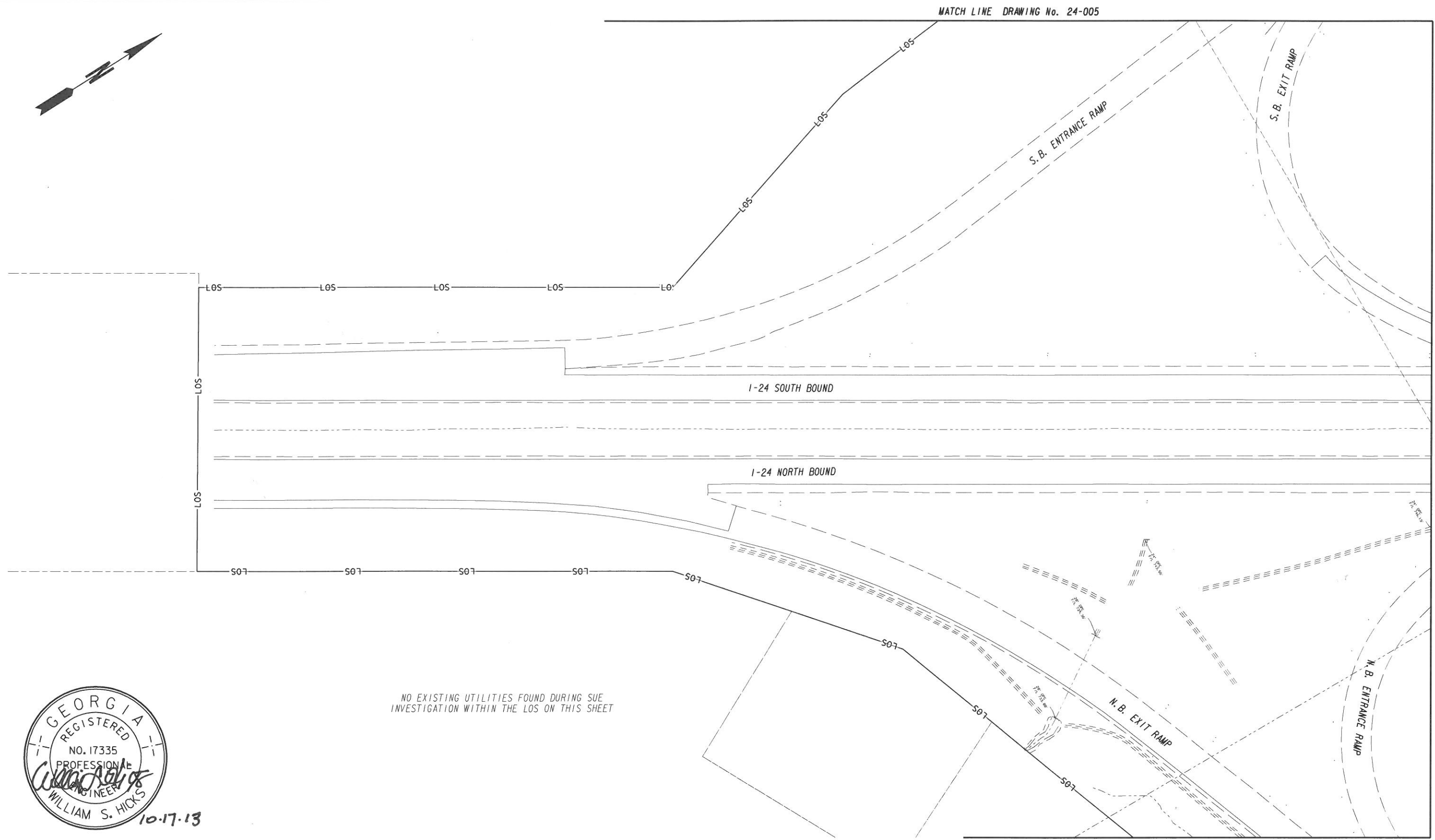
PLAN RELEASE			
DRAWN BY	DATE	CHECKED BY	DATE
JMJ	10/02/13	MSW	10/04/13

P. I. 0011682
 TASK ORDER *1 JOB ORDER *4
 KCI PROJECT NUMBER: 05123053D
 KCI CONTACT: MIKE S. WILSON

ENGINEERS
 PLANNERS
 SCIENTISTS
 CONSTRUCTION MANAGERS
 2160 Satellite Boulevard
 Suite 130
 Duluth, GA 30097
 Phone: 678-990-6200
 Fax: 678-990-6222
 www.kci.com

REVISION DATES		
NO.	DATE	DESCRIPTION

STATE OF GEORGIA
 DEPARTMENT OF TRANSPORTATION
 OFFICE: UTILITIES
UTILITY PLANS
 1-24 @ SR 299
 6 MILES NE OF NEW ENGLAND
 DRAWING No. 24-00D



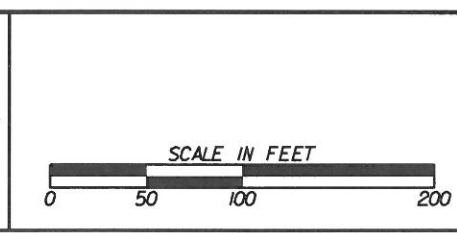
PLAN RELEASE			
DRAWN BY	DATE	CHECKED BY	DATE
JMJ	10/02/13	MSW	10/04/13

P. I. 0011682
TASK ORDER *1 JOB ORDER *4
KCI PROJECT NUMBER: 0512305D
KCI CONTACT: MIKE S. WILSON

KCI TECHNOLOGIES

ENGINEERS
 PLANNERS
 SCIENTISTS
 CONSTRUCTION MANAGERS

2160 Satellite Boulevard
 Suite 130
 Duluth, GA 30097
 Phone: 678-990-6200
 Fax: 678-990-6222
 www.kci.com



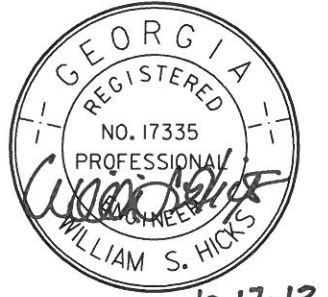
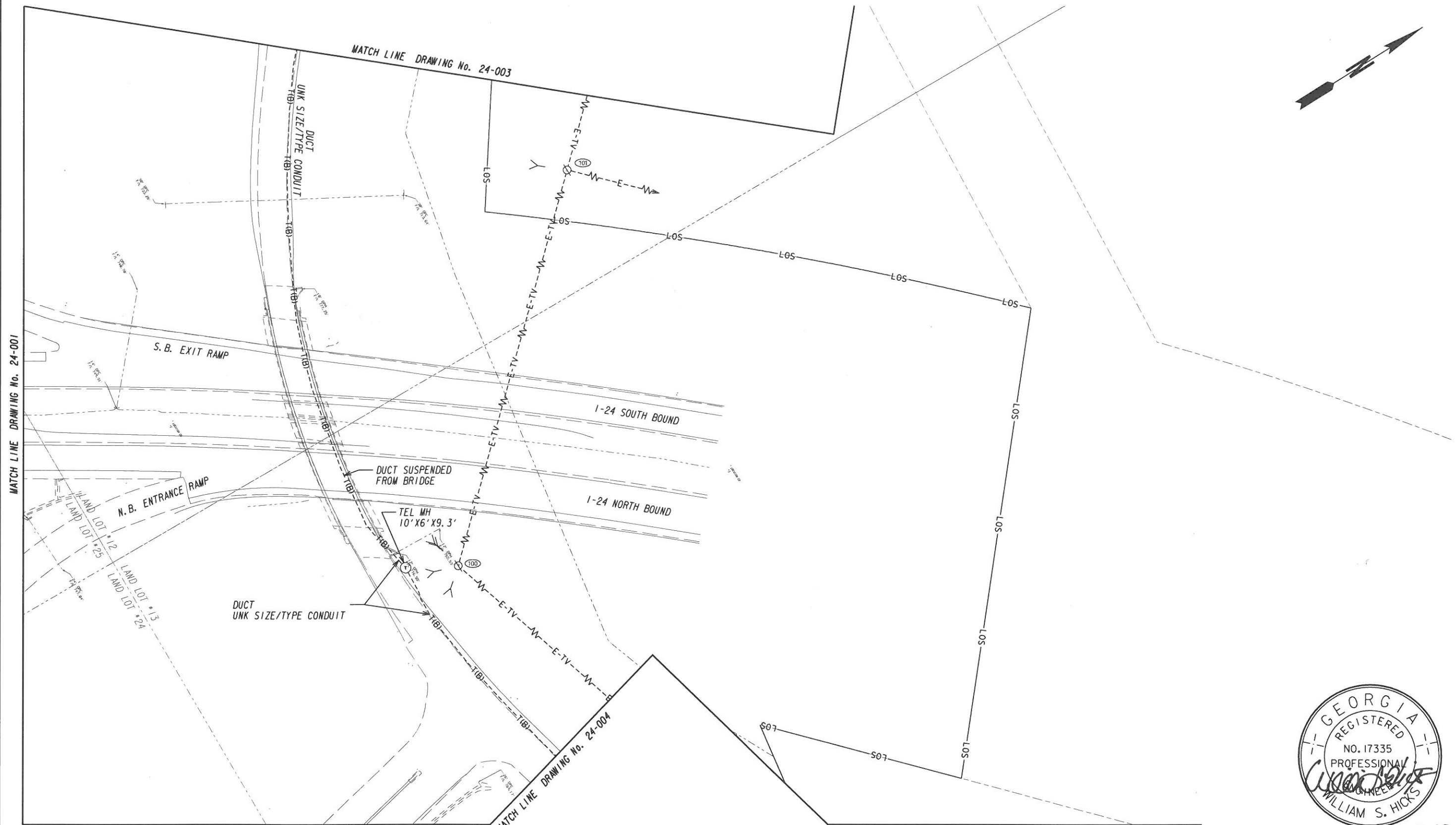
REVISION DATES		

STATE OF GEORGIA
 DEPARTMENT OF TRANSPORTATION
 OFFICE: UTILITIES

UTILITY PLANS

1-24 @ SR 299
 6 MILES NE OF NEW ENGLAND

DRAWING No. 24-001

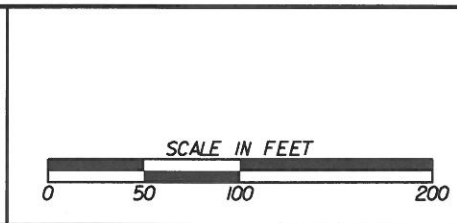


10-17-13

PLAN RELEASE			
DRAWN BY	DATE	CHECKED BY	DATE
JMJ	10/02/13	MSW	10/04/13

P.I. 0011682
TASK ORDER *1 JOB ORDER *4
KCI PROJECT NUMBER: 0512305D
KCI CONTACT: MIKE S. WILSON

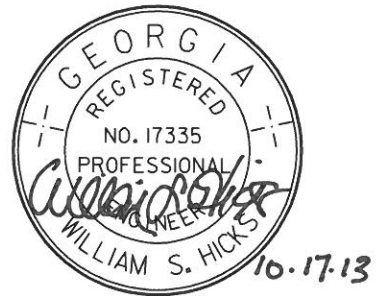
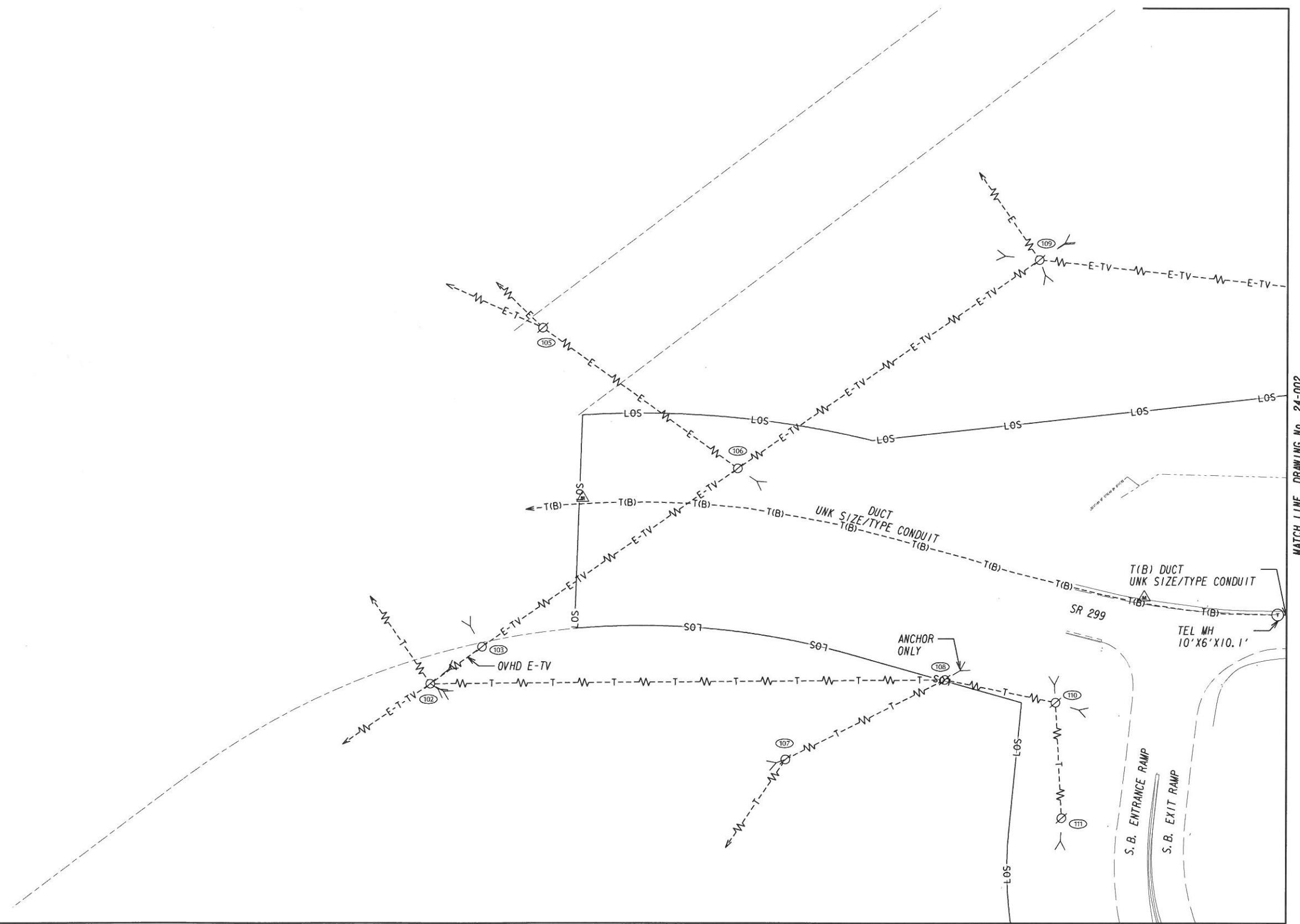
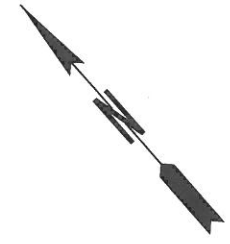
KCI TECHNOLOGIES
 ENGINEERS
 PLANNERS
 SCIENTISTS
 CONSTRUCTION MANAGERS
 2160 Satellite Boulevard
 Suite 130
 Duluth, GA 30097
 Phone: 678-990-6200
 Fax: 678-990-6222
 www.kci.com



REVISION DATES		

STATE OF GEORGIA
 DEPARTMENT OF TRANSPORTATION
 OFFICE: UTILITIES
UTILITY PLANS
 I-24 @ SR 299
 6 MILES NE OF NEW ENGLAND

DRAWING No. 24-002



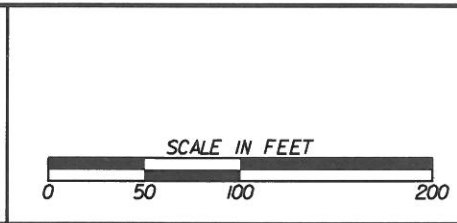
MATCH LINE DRAWING No. 24-005

MATCH LINE DRAWING No. 24-002

PLAN RELEASE			
DRAWN BY	DATE	CHECKED BY	DATE
JMJ	10/02/13	MSW	10/04/13

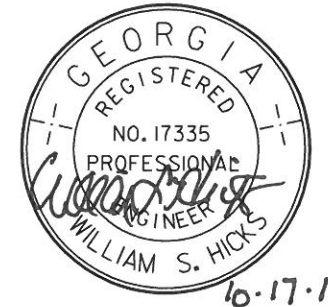
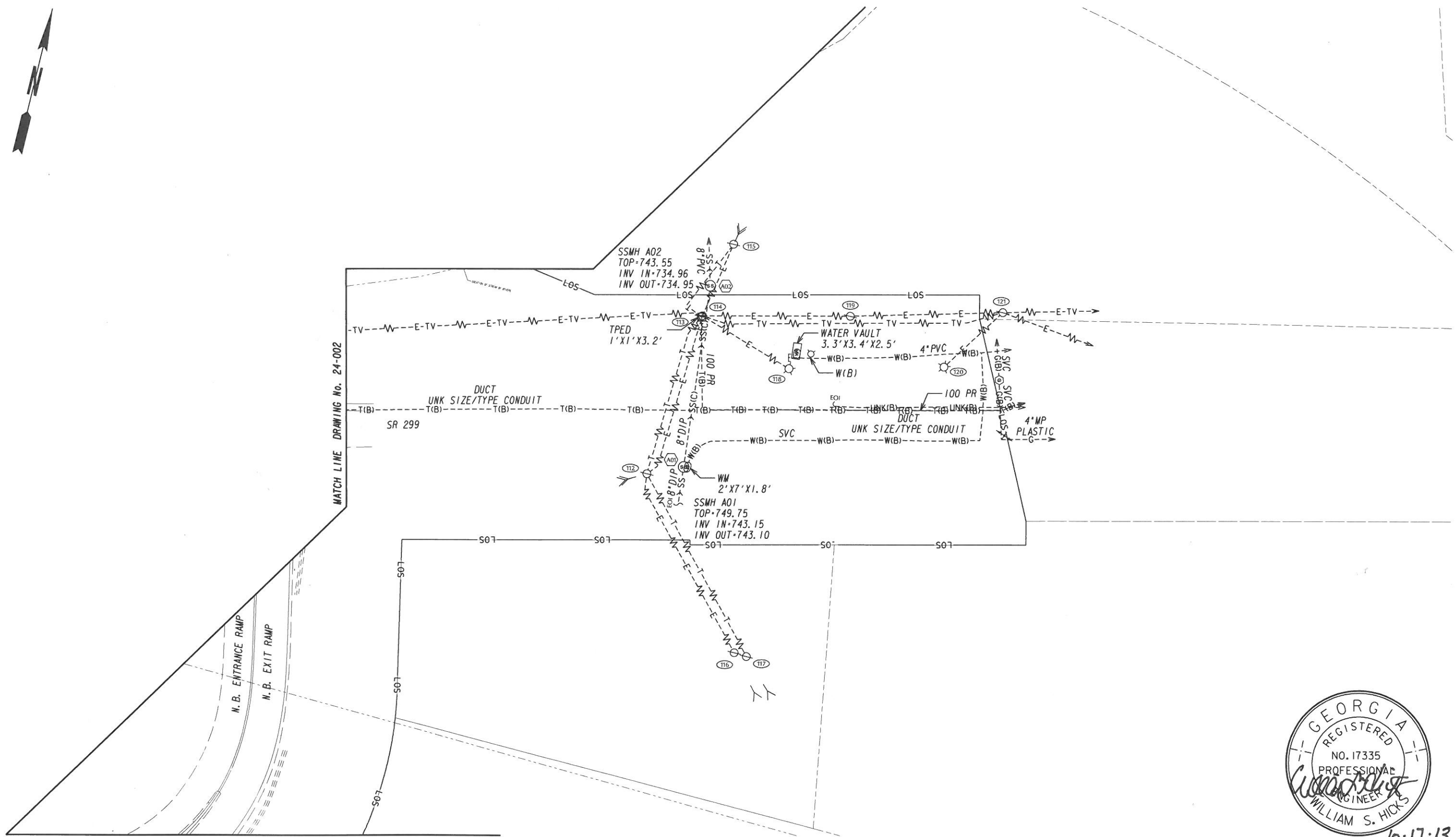
P. I. 0011682
TASK ORDER *1 JOB ORDER *4
KCI PROJECT NUMBER: 0512305D
KCI CONTACT: MIKE S. WILSON

KCI TECHNOLOGIES
 ENGINEERS
 PLANNERS
 SCIENTISTS
 CONSTRUCTION MANAGERS
 2160 Satellite Boulevard
 Suite 130
 Duluth, GA 30097
 Phone: 678-990-6200
 Fax: 678-990-6222
 www.kci.com



REVISION DATES	

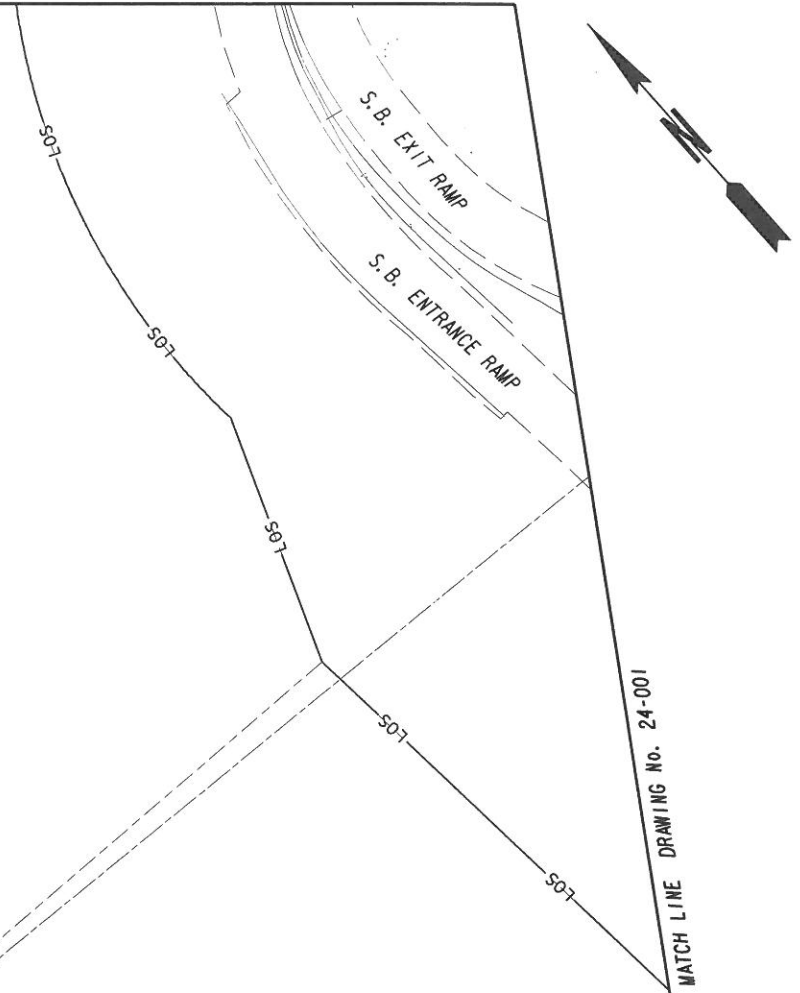
STATE OF GEORGIA
 DEPARTMENT OF TRANSPORTATION
 OFFICE: UTILITIES
UTILITY PLANS
 1-24 @ SR 299
 6 MILES NE OF NEW ENGLAND
 DRAWING No. 24-003



MATCH LINE DRAWING No. 24-006

<table border="1"> <thead> <tr> <th colspan="4">PLAN RELEASE</th> </tr> <tr> <th>DRAWN BY</th> <th>DATE</th> <th>CHECKED BY</th> <th>DATE</th> </tr> </thead> <tbody> <tr> <td>JMJ</td> <td>10/02/13</td> <td>MSW</td> <td>10/04/13</td> </tr> </tbody> </table>				PLAN RELEASE				DRAWN BY	DATE	CHECKED BY	DATE	JMJ	10/02/13	MSW	10/04/13	<table border="1"> <tr> <td>P. I. 0011682</td> <td>TASK ORDER *1 JOB ORDER *4</td> </tr> <tr> <td colspan="2">KCI PROJECT NUMBER: 0512305D</td> </tr> <tr> <td colspan="2">KCI CONTACT: MIKE S. WILSON</td> </tr> </table>		P. I. 0011682	TASK ORDER *1 JOB ORDER *4	KCI PROJECT NUMBER: 0512305D		KCI CONTACT: MIKE S. WILSON		<table border="1"> <tr> <td rowspan="2"> </td> <td> ENGINEERS PLANNERS SCIENTISTS CONSTRUCTION MANAGERS </td> </tr> <tr> <td> 2160 Satellite Boulevard Suite 130 Duluth, GA 30097 Phone: 678-990-6200 Fax: 678-990-6222 www.kci.com </td> </tr> </table>			ENGINEERS PLANNERS SCIENTISTS CONSTRUCTION MANAGERS	2160 Satellite Boulevard Suite 130 Duluth, GA 30097 Phone: 678-990-6200 Fax: 678-990-6222 www.kci.com	<table border="1"> <thead> <tr> <th colspan="3">REVISION DATES</th> </tr> </thead> <tbody> <tr> <td> </td> <td> </td> <td> </td> </tr> <tr> <td> </td> <td> </td> <td> </td> </tr> <tr> <td> </td> <td> </td> <td> </td> </tr> <tr> <td> </td> <td> </td> <td> </td> </tr> </tbody> </table>		REVISION DATES															<table border="1"> <tr> <td colspan="2">STATE OF GEORGIA DEPARTMENT OF TRANSPORTATION</td> </tr> <tr> <td colspan="2">OFFICE: UTILITIES</td> </tr> <tr> <td colspan="2" style="text-align: center;">UTILITY PLANS</td> </tr> <tr> <td colspan="2">1-24 @ SR 299 6 MILES NE OF NEW ENGLAND</td> </tr> </table>		STATE OF GEORGIA DEPARTMENT OF TRANSPORTATION		OFFICE: UTILITIES		UTILITY PLANS		1-24 @ SR 299 6 MILES NE OF NEW ENGLAND	
PLAN RELEASE																																																							
DRAWN BY	DATE	CHECKED BY	DATE																																																				
JMJ	10/02/13	MSW	10/04/13																																																				
P. I. 0011682	TASK ORDER *1 JOB ORDER *4																																																						
KCI PROJECT NUMBER: 0512305D																																																							
KCI CONTACT: MIKE S. WILSON																																																							
	ENGINEERS PLANNERS SCIENTISTS CONSTRUCTION MANAGERS																																																						
	2160 Satellite Boulevard Suite 130 Duluth, GA 30097 Phone: 678-990-6200 Fax: 678-990-6222 www.kci.com																																																						
REVISION DATES																																																							
STATE OF GEORGIA DEPARTMENT OF TRANSPORTATION																																																							
OFFICE: UTILITIES																																																							
UTILITY PLANS																																																							
1-24 @ SR 299 6 MILES NE OF NEW ENGLAND																																																							
<table border="1"> <tr> <td colspan="2">SCALE IN FEET</td> <td colspan="2">DRAWING No. 24-004</td> </tr> <tr> <td colspan="2">0 50 100 200</td> <td colspan="2"></td> </tr> </table>				SCALE IN FEET		DRAWING No. 24-004		0 50 100 200																																															
SCALE IN FEET		DRAWING No. 24-004																																																					
0 50 100 200																																																							

MATCH LINE DRAWING No. 24-003



NO EXISTING UTILITIES FOUND DURING SUE INVESTIGATION WITHIN THE LOS ON THIS SHEET

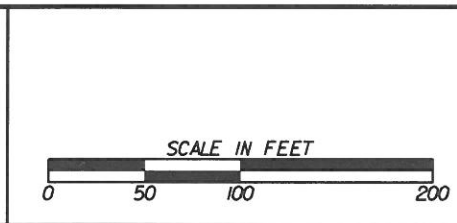


PLAN RELEASE			
DRAWN BY	DATE	CHECKED BY	DATE
JMJ	10/02/13	MSW	10/04/13

P. I. 0011682
TASK ORDER *1 JOB ORDER *4
KCI PROJECT NUMBER: 0512305D
KCI CONTACT: MIKE S. WILSON

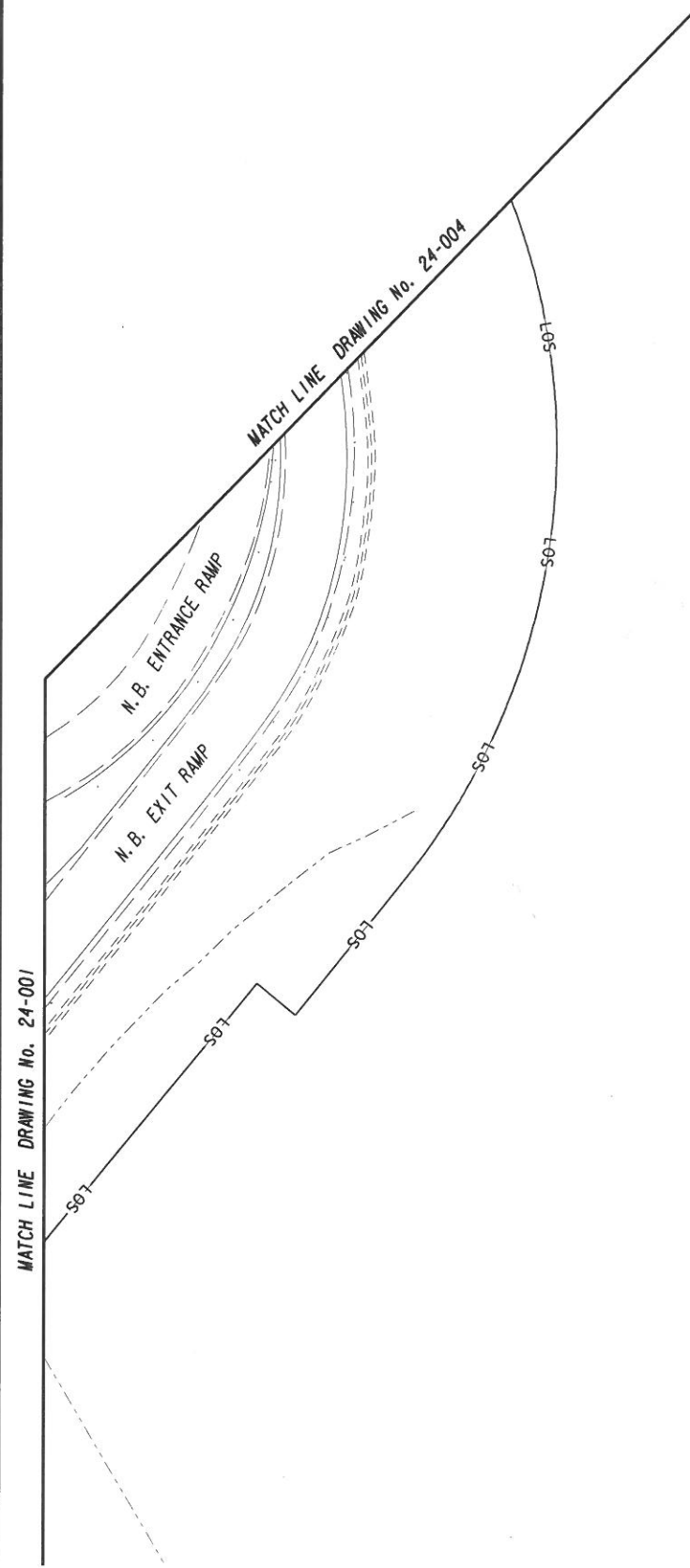
ENGINEERS
PLANNERS
SCIENTISTS
CONSTRUCTION MANAGERS

2160 Satellite Boulevard
Suite 130
Duluth, GA 30097
Phone: 678-990-6200
Fax: 678-990-6222
www.kci.com

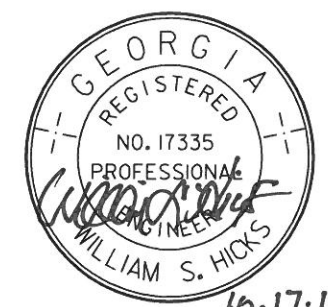


REVISION DATES		

STATE OF GEORGIA DEPARTMENT OF TRANSPORTATION
OFFICE: UTILITIES
UTILITY PLANS
1-24 @ SR 299 6 MILES NE OF NEW ENGLAND
DRAWING No. 24-005



NO EXISTING UTILITIES FOUND DURING SUE INVESTIGATION WITHIN THE LOS ON THIS SHEET



16.17.13

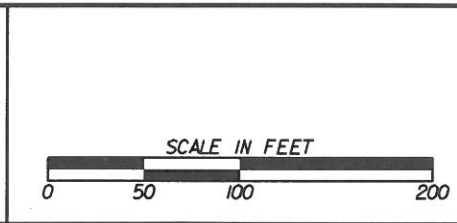
PLAN RELEASE			
DRAWN BY	DATE	CHECKED BY	DATE
JMJ	10/02/13	MSW	10/04/13

P. I. 0011682
TASK ORDER *1 JOB ORDER *4
KCI PROJECT NUMBER: 0512305D
KCI CONTACT: MIKE S. WILSON

KCI
TECHNOLOGIES

ENGINEERS
PLANNERS
SCIENTISTS
CONSTRUCTION MANAGERS

2160 Satellite Boulevard
Suite 130
Duluth, GA 30097
Phone: 678-990-6200
Fax: 678-990-6222
www.kci.com



REVISION DATES		
NO.	DATE	DESCRIPTION

STATE OF GEORGIA
DEPARTMENT OF TRANSPORTATION
OFFICE: UTILITIES

UTILITY PLANS

1-24 @ SR 299
6 MILES NE OF NEW ENGLAND

DRAWING NO.
24-006